



Al Rabeeh School Al Rabeeh Academy
40 Years of Educational Excellence
Abu Dhabi, United Arab Emirates

"Al Rabeeh is our second home," Mrs. Ruba



2021-2024



Contents



Introduction

Leadership Team

Board of Governors

Summary of Term Dates

Student Support

Uniform and Dress Code

Curriculum Information

Assessment Information

Attendance and Punctuality

Important Information

Safeguarding

Health and Medical

Escalation Policy



Al Rabeeh School

ARS MISSION



A community of respectful, responsible and resilient students.



Our Vision

We aspire to be ... A global community of thinkers, creators, innovators, and leaders who have a positive impact on the world of tomorrow.

Our Motto



To what you want to be.



All the learning experiences you can.



Achieve Your dream.

ASPIRING, ACQUIRING & ACHIEVING TOGETHER



Aspire- To what you want to be Acquire- All the learning experiences you can Achieve- Your dream



Welcome to the Al Rabeeh School Parent Handbook! We are delighted to have you as part of our school community. This handbook is designed to provide you with important information about our policies, procedures, and expectations, helping to ensure a successful and positive experience for your child at Al Rabeeh School. We believe that a strong partnership between school and family is key to fostering an environment where students can thrive academically, socially, and emotionally. We look forward to working together to support your child's growth and development throughout the year. Further information can be found on our website.

Executive Leadership



Riaan Huyser
Executive Principal

Executive Leadership



Usman Baig Ali
Vice Principal



Louise Casey
Deputy Head
Primary



Sonia Naru
Executive Head
Inclusion



Sally Ahmed
Deputy Head
MOE

Leadership Team

Senior Leadership

Assistant Heads



Andrea Garcha
Assistant Head
EYFS & KS1



Andrew Wilkinson
Assistant Head
KS2 & KS3



Courtney Clough
Assistant Head
Pastoral & Wellbeing



Noha Al Samahi
Assistant Head
MOE



Board of Governors

The main role of Parent Governors is one of a **critical friend supporting the school constructively through dialogue** to achieve its goals. The function of the Parent Governors is maintaining oversight (**not management**) of the school's operation.

ARS Parent Governors 2024/2025

For details of our governor representatives, please contact Ms Maryam for their contact name and details.

Summary of Term Dates

Day	FS1 & FS2	Year 1-2-3	Year 4-7
Monday 28th No Buses	All students and parents will have the opportunity to Meet & Greet teachers from years FS1-Y7 between 9am - 2pm on the first day		
	<p>New students (Year 1 - 7) first day of school.</p> <p>Only new students will join classes: Arrival 8:30 am - 9:00 am Finish 12:00 pm</p> <p>New Parent Meeting with School Management 9:00am - 9:30am Second Floor Meeting Room</p>		
Tuesday 29th No Buses	First Day for FS1 & FS2 8:30am to 12:00am	No school for years 1-2-3 on Tuesday	First Day for Years 4-5-6-7 Normal school timings: 7:15 - 7:40 - Arrival 14:10 - Dismissal
Wednesday 30 th Buses Y1-7	FS1 and FS2 - 8:30am-12:00pm	All year 1-7 students will attend school. Normal School timings: 7:15 - 7:40 Arrival 2:10 - Dismissal	
Thursday 31st Buses Y1-7	FS1 & FS2 - 8:30am to 12:00am	Years 1-7 will attend school. Normal School timings: 7:15-7:40 Arrival 2:10- Dismissal	
Friday 1 st Buses FS1-7	Arrival - 7:15am - 7:40am All students finish by 12:00 every Friday Bus students will use the bus service from Friday onwards		



Summary of Term Dates



AL RABEEH SCHOOL CALENDAR 2024-2025



August 2024							September 2024							October 2024							
M	Tu	W	Th	F	S	Su	M	Tu	W	Th	F	S	Su	M	Tu	W	Th	F	S	Su	
			1	2	3	4							1			1	2	3	4	5	6
5	6	7	8	9	10	11	2	3	4	5	6	7	8	7	8	9	10	11	12	13	
12	13	14	15	16	17	18	9	10	11	12	13	14	15	14	15	16	17	18	19	20	
19	20	21	22	23	24	25	16	17	18	19	20	21	22	21	22	23	24	25	26	27	
26	27	28	29	30	31		23	24	25	26	27	28	29	28	29	30	31				
							30														

November 2024							December 2024							January 2025						
M	Tu	W	Th	F	S	Su	M	Tu	W	Th	F	S	Su	M	Tu	W	Th	F	S	Su
			1	2	3								1			1	2	3	4	5
4	5	6	7	8	9	10	2	3	4	5	6	7	8	6	7	8	9	10	11	12
11	12	13	14	15	16	17	9	10	11	12	13	14	15	13	14	15	16	17	18	19
18	19	20	21	22	23	24	16	17	18	19	20	21	22	20	21	22	23	24	25	26
25	26	27	28	29	30		23	24	25	26	27	28	29	27	28	29	30	31		
							30	31												

February 2025							March 2025							April 2025						
M	Tu	W	Th	F	S	Su	M	Tu	W	Th	F	S	Su	M	Tu	W	Th	F	S	Su
				1	2						1	2			1	2	3	4	5	6
3	4	5	6	7	8	9	3	4	5	6	7	8	9	7	8	9	10	11	12	13
10	11	12	13	14	15	16	10	11	12	13	14	15	16	14	15	16	17	18	19	20
17	18	19	20	21	22	23	17	18	19	20	21	22	23	21	22	23	24	25	26	27
24	25	26	27	28			24	25	26	27	28	29	30	28	29	30				
							31													

May 2025							June 2025							July 2025							
M	Tu	W	Th	F	S	Su	M	Tu	W	Th	F	S	Su	M	Tu	W	Th	F	S	Su	
			1	2	3	4							1			1	2	3	4	5	6
5	6	7	8	9	10	11	2	3	4	5	6	7	8	7	8	9	10	11	12	13	
12	13	14	15	16	17	18	9	10	11	12	13	14	15	14	15	16	17	18	19	20	
19	20	21	22	23	24	25	16	17	18	19	20	21	22	21	22	23	24	25	26	27	
26	27	28	29	30	31		23	24	25	26	27	28	29	28	29	30	31				
							30														

	First Day of the School Term		Islamic & National Holidays
	Last Day of School Term		Continuous Exams Day
	Staff Induction Week		School Closed/Holidays
	Ramadan		Last Day of School

تلفون: 04328844 | الفاكس: 04328866 | البريد الإلكتروني: info@alrabeehschool.com
 مدرسة الربيع الخاصة - مبنى 1807 - دبي
 الإمارات العربية المتحدة

Tel: +971 2 4482846 | Fax: +971 2 4482844
 Al Rabeeh School, P.O. Box: 41807, Abu Dhabi, United Arab Emirates



For any enquiry, below are necessary emails you may need

Admin : admins@alrabeeh.sch.ae
Registration : admissions@alrabeeh.sch.ae
Parent Relations Executive : maryam.alomari@alrabeeh.sch.ae
Accounts : kristin.alipis@alrabeeh.sch.ae
IT Helpdesk & Support : mohamed.muzammil@alrabeeh.sch.ae
School Counsellor : noura.dandachli@alrabeeh.sch.ae
School Clinic : clinic@alrabeeh.sch.ae



Christine Cajilla
School Nurse



Asumpta Monis
Asst. Nurse



Noura Dandachli
Social Worker



Kristin Alipis
Asst. Accountant



Catherine Osorio
Asst. Accountant



Fatin Elsheikh
Registrar / Admission



Maryam Alomari
Parent Relation Executive



Tamara Sheika
Admin Assist./ Front Office



Coleen Santiago
Admin Assist./ Front Office



Muzammil
Senior IT Manager



Rizwan Haji
Data Manager



Noura Dandachli
Social Worker

My name is **Noura Dandachli** and I hold a bachelor's degree in Psychology with distinction from the American University of Beirut. During my academic journey, I enjoyed child development courses, and have worked closely with children before in two work settings. I have also worked alongside the Beirut Model of United Nations team to organize the event, and have provided mental health and emotional support as well as psychological first aid through being a volunteer in a Lebanese NGO. I have also interned, for several months, in a Lebanese school where I was responsible for managing student behaviour.

My main responsibilities are:

- liaising with both teachers and parents in order to make sure all the children at our school are safe, healthy, and happy!
- Intervention for any social, emotional or behavioral problems a child might have
- Support teachers with strategies to use in class, and parents with strategies to use at home
- I deal with issues such as social skills, anxiety, feeling left out, anger-management, family problems, and so on.
- Providing students with tips covering different weekly topics (dealing with exam stress, how to eat healthy, how to lead a better lifestyle as a family, etc.).
- Organising specific event days (mental health day, anti-bullying day, health and nutrition week, etc.) for the children to be even more aware of the world around them, in a fun way!



Sonia Naru
Exec. Head of Inclusion



Courtney Clough
Asst. Head Pastoral & Wellbeing



Jon Simpson
Deputy SENCo



Brooke Fisher
Inclusion Teacher



Basma Eldeeb
Inclusion Teacher



Maryam Alomari
EAL Teacher



Aaron Cercado
LSA



Emily Recana
LSA



Virginia Andaya
LSA



Zipporah Kariuki
LSA



Linda Alube
LSA

- Focus on Quality First Teaching
- We provide support for students, teachers and parents
- Additional sessions for 'catch up' and 'closing gaps'
- Personalised targets and goals for students who require additional learning support
- Support from outside agencies e.g speech therapy
- Challenge for high performing students
- 4 Qualified SENCo's
- Strong links with Adek
- Recognised for outstanding support
- EAL Support provided for those who require additional support in English

School Uniform



FS 1 - FS 2



Year 1 - Year 6

The Curriculum

At Al Rabeeh school we follow the English National Curriculum, covering English, Maths, Science and the foundation subjects.

This is a skills based curriculum and encourages children to think and have independent learning.

Wherever possible our creative curriculum encourages children to have ownership of their own learning and we try to encourage cross curricular links.

The children also follow the Arabic, Islamic, Moral Education and UAE Social Studies curriculum.





Early Years Foundation Stage

PSED
 Physical Development
 Communication and Language
 Literacy
 Maths
 Understanding the World
 Expressive Art and Design

Humanities
 Geography
 History

Creative Arts
 Art and Design
 Music

Computing
 Design
 Technology

English
 Reading
 Writing
 SPaG
 Speaking and Listening

Mathematics
 Number and Place Value
 Measure
 Geometry
 Reasoning

Science
 Knowledge
 Understanding
 Application

Physical Education

Languages

P4C

MOE

Arabic A
 Reading
 (Writing-Hand writing-Spelling)
 listening
 Speaking

Arabic B
 Reading
 (Writing-Hand writing-Spelling)
 listening
 Speaking

Islamic A
 Quran
 Hadith
 Prophet Biography
 Worships

Islamic B
 Quran
 Hadith
 Prophet Biography
 Worships

Social Studies
 History
 Geography
 National Identity

Extra Curricular Activities

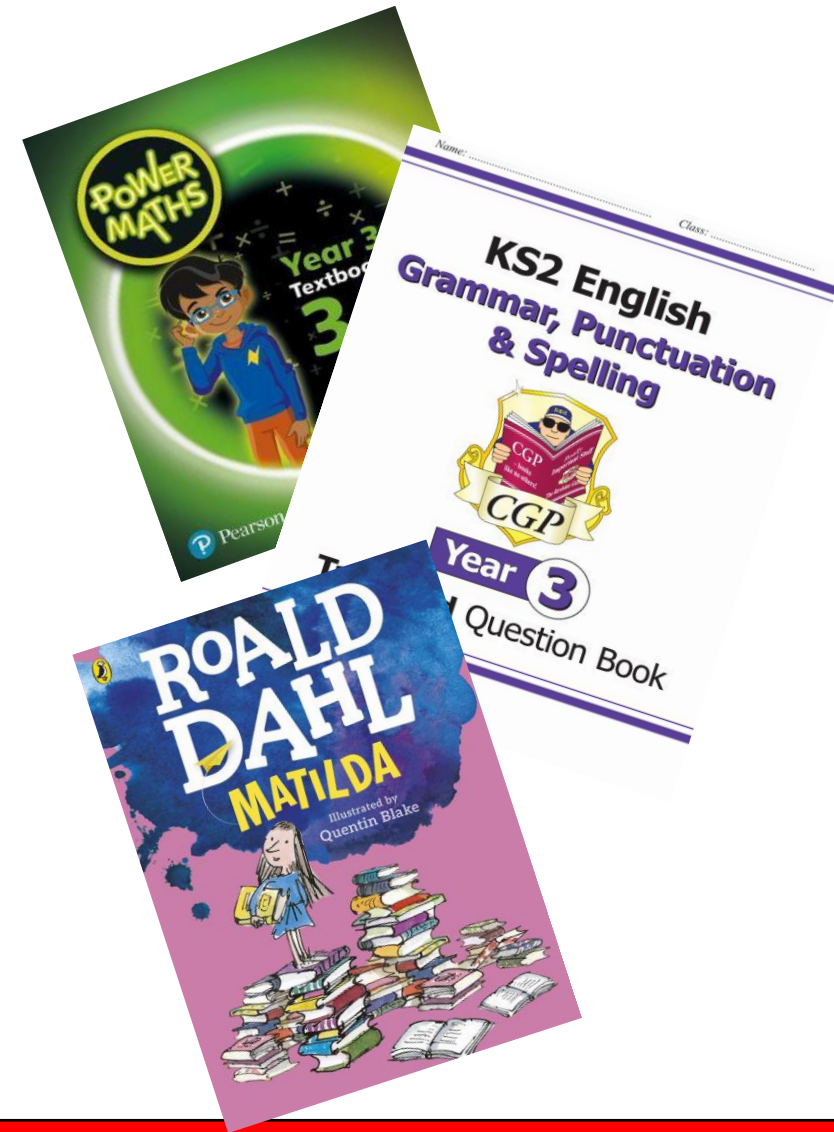
- Robotics
- Quran
- Arabic
- Homework support
- Cycling
- Karate
- Swimming
- Computing
- Arts
- Gymnastics

Learning Resources

Your child will be given a set of text books and reading books to support their learning. These will be used within class, but taken home each day so that they can be used to extend learning at home.

We have a number of digital learning subscriptions. All logins will be shared with parents and students with instructions on how to access the resource. E.g. Times Table Rockstars; Accelerated Reader.

Parents will also have the opportunity once each half term to look at children's workbooks, which will show the progress your child has made.



Learning Resources (MOE Curriculum)

Your child will be given a set of text books and workbooks to support their learning. These will be used within class, but taken home each day so that they can be used to extend learning at home.

We have a number of digital learning subscriptions. All logins will be shared with parents and students with instructions on how to access the resource. E.g. Alef (Y6&7) Kutubee; Alef-Baa-Taa. A.B.T Arabic platform for Non-Arab.

Parents will also have the opportunity once each half term to look at children's workbooks, which will show the progress your child has made.



Homework

Homework will primarily be set on the google classroom. It will also be uploaded to Class Dojo.

The majority of children's homework will be completed in text books or in their Homework book.

Additional homework will be set when needed to support in-class learning, especially in writing tasks. Each topic will have a project to be completed at home, it will then be presented in school on a given date, encouraging the children to work for themselves.

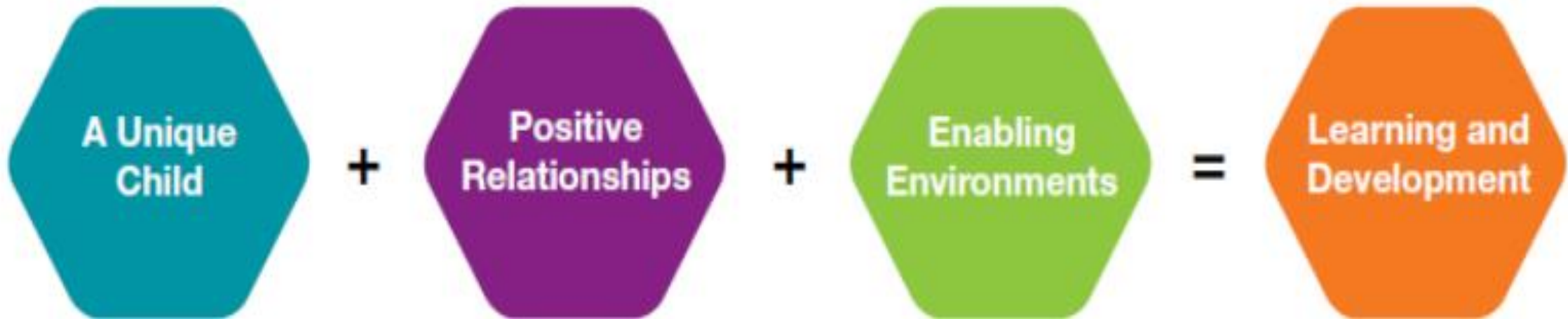


Enriching the Curriculum

- At Al Rabeeh, we offer many opportunities for the children to attend Extra Curricular Activities – ECA's.
- Children are encouraged to attend these extra curricular activities to develop themselves as individuals and pursue their personal interests and hobbies.
- A timetable of activities will be available in the upcoming weeks.
- Trips are planned for each year group so that our children have a chance to apply their learning beyond the classroom. Reply slips and consent forms need to be returned to school as soon as possible.



The Early Years Framework



There are 7 areas of Learning and Development

Prime Areas of learning

Communication and Language

- 1) Listening, Attention and Understanding
- 2) Speaking

PSED

- 3) Self-regulation
- 4) Managing Self
- 5) Building Relationships

Physical Development

- 6) Gross Motor Skills
- 7) Fine Motor Skills

Specific Areas of learning

Mathematics

- 8) Number
- 9) Numerical Patterns

Literacy

- 10) Comprehension
- 11) Word Reading
- 12) Writing

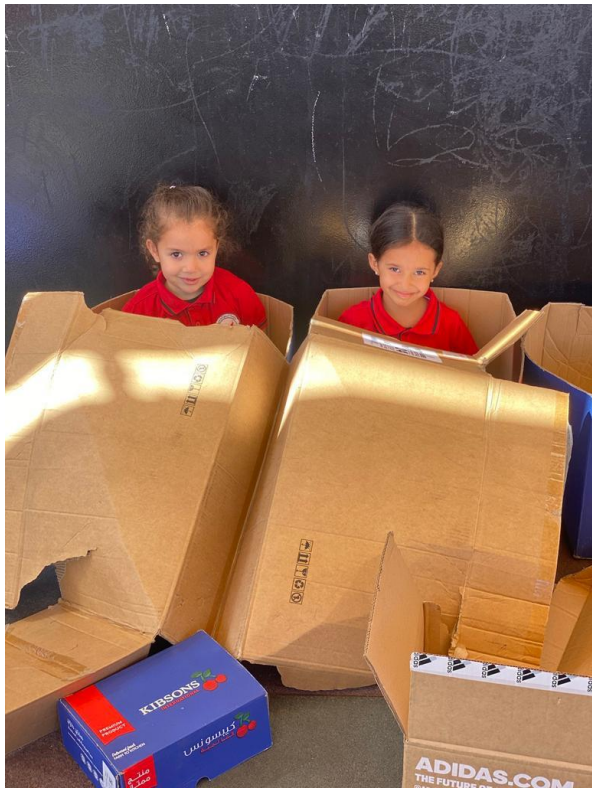
Expressive Arts and Design

- 13) Creative with materials
- 14) Being imaginative and expressive

Understanding the World

- 15) People, Culture and Communities
- 16) The Natural World
- 17) Past and Present

Our Early Years philosophy is to create curious, happy, confident learners. Our environment provides our children with a safe and stimulating space where they can take ownership of their learning through play.

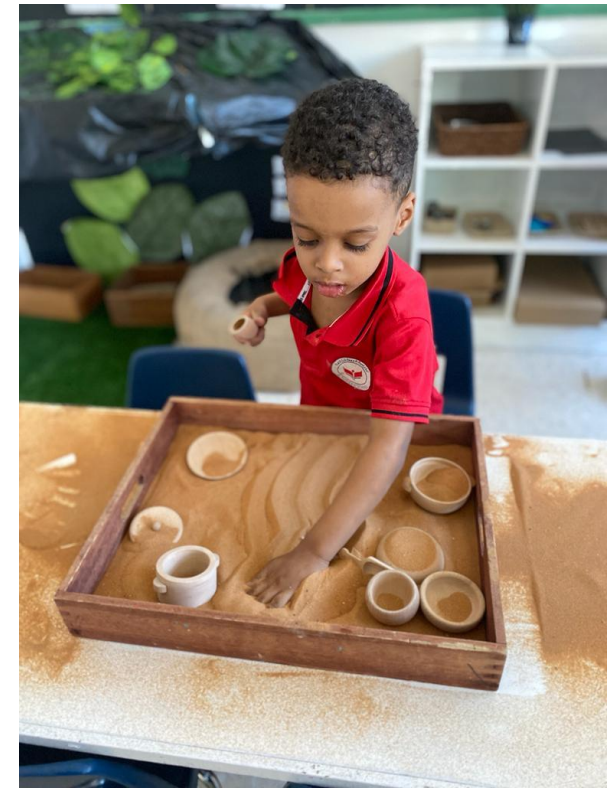


Play is the highest form of research.

-Albert Einstein



DrLaura.com





A Typical Morning in Early Years



Morning Welcome

Self-registration and carpet registration

Whole class stands for National Anthem

Whole class 'Wake up, Shake Up'

Circle time: 10-15mins

Emotional check in- how do you feel today and why?

Talk about the day of the week and date

Discuss the weather in Abu Dhabi and compare to the UK weather/weather from around the world

Reinforce numbers, shapes, sight words

Sing songs and rhymes

Phonics for FS2 using our Read, Write Inc. programme: 20-30 mins

Aspire- To what you want to be

Acquire- All the learning experiences you can

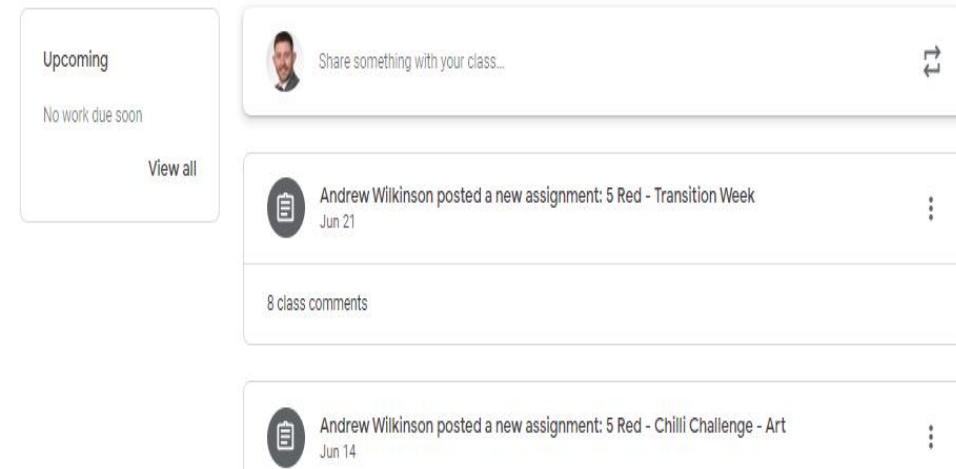
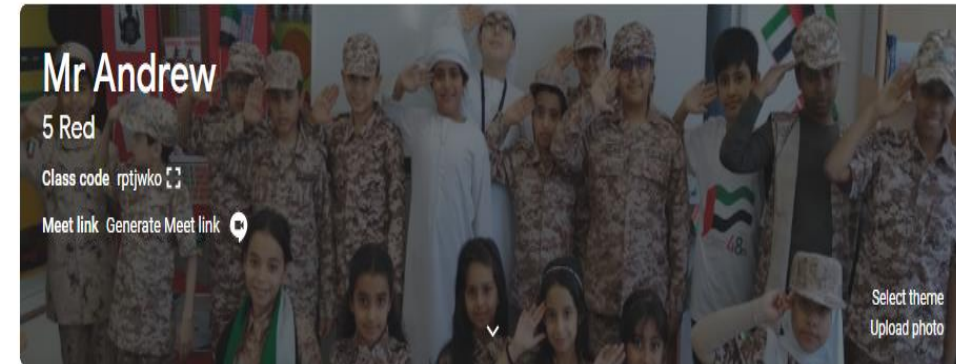
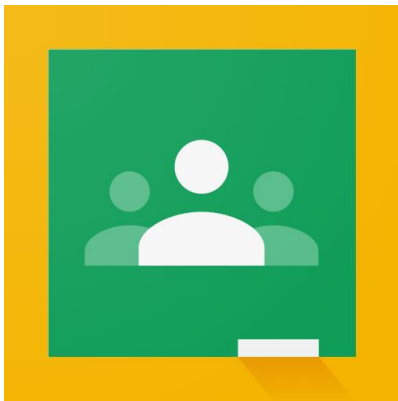
Achieve- Your dream

Learning experiences in Early Years

Throughout each day, your child will have a wonderful range of learning experiences...

- Child-Initiated Learning
- Snacktime
- Outdoor playtime
- Arabic or Islamic
- Mathematics and Literacy Focus
- Learning outdoors
- Fine motor and gross motor development
- Storybook, songs and home time

- Year Groups 1-7
- Homework to be published here which can be uploaded from the students also
- Lessons posted here for Distance Learners - only in the event of a positive test result.



At ARS we take a holistic view on assessment, with the goal of it being a tool to help support teachers understand the needs of their students.

We assess pupils against the English National Curriculum in several ways:

- Formative assessment
- Summative assessment

Key Stage 2 & 3 pupils also complete standardised assessments (CAT4, GL & Accelerated Reader) to help us track them internationally.



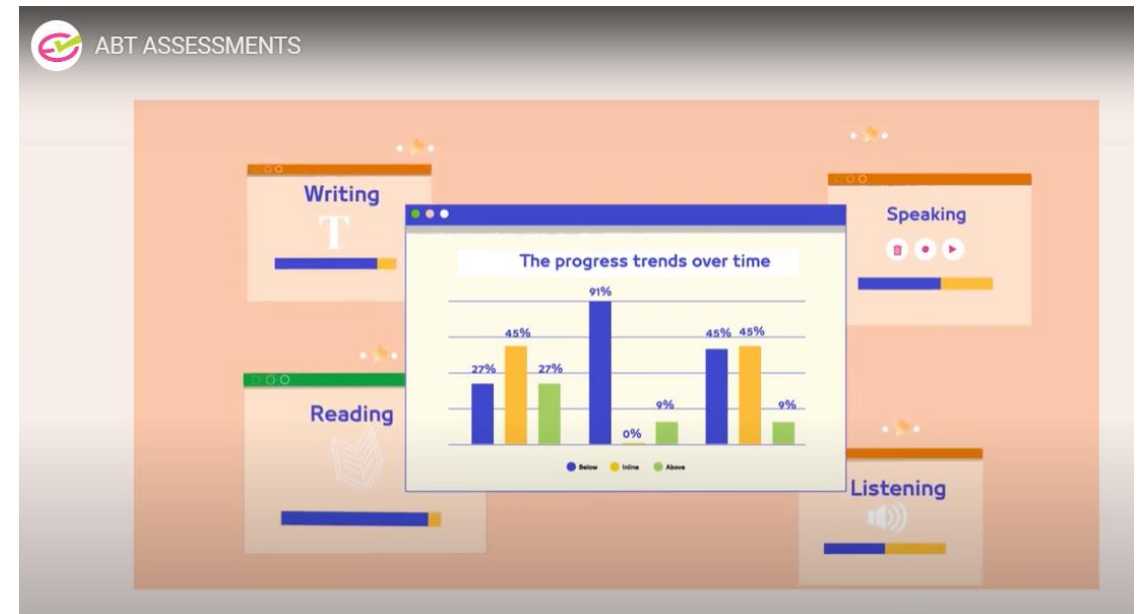
Key Questions:

- Is this assessment useful?
- What does it tell the teacher?

We assess pupils against the UAE National Curriculum in several ways:

- Formative assessment
- Summative assessment

Key Stage 2 & 3 pupils also complete standardised assessments (A.B.T) to help us track them internationally.



Key Questions:

- Is this assessment useful?
- What does it tell the teacher?

Attendance and Punctuality

- Gates **open at 07:15** and **close at 07:40**. Lessons start promptly at **07:45**
- Any students attending school after the gates close will be registered a late.
- Persistent lateness negatively affects your child's education and will incur punctuality protocol from the school.
- We want your children to receive the best possible education and raise standards in all areas of the curriculum. We can only do this if your child is attending school everyday and if your child is on time.
- Children miss vital reading/phonic lessons and other interventions time which is paramount to the success of your child's education.
- ADEK stipulate that anything below 95% attendance is a cause for concern and has a heavy impact on the marks on the children's Ministry Mark Sheet at the end of the year.



School success starts
with attendance



School Website

<http://www.alrabeeh.sch.ae/>

ISAMs

Once connected, you can receive important messages and access documents through the portal.

All school reports are shared via the iSAMS Parent Portal.

Class DoJo

Teachers communicate and showcase work on this app. Your child will be sent home with a code with installation instructions

Email

Please feel free to email if you have any questions or queries.

Appointments

Please call or email to make an appointment should you need to meet anyone.

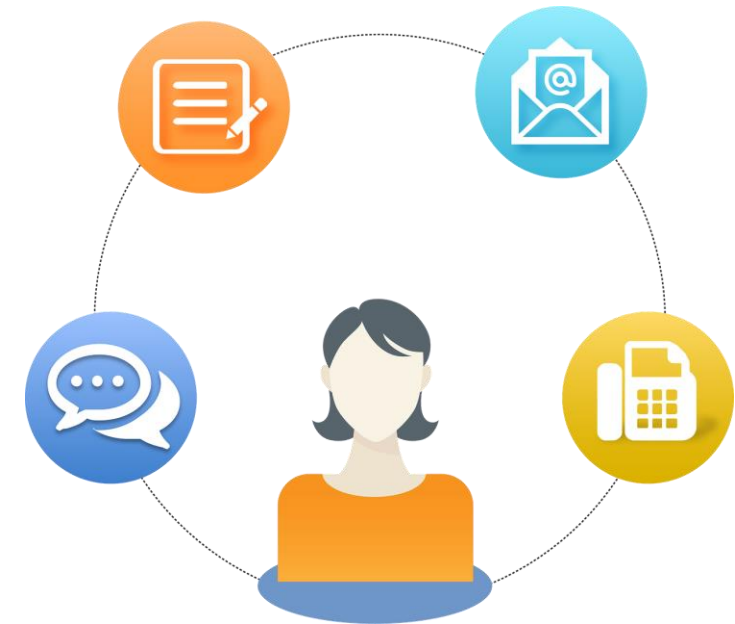
Parent Liaison Officer

Mrs. Mariam our parent liaison officer can assist with any queries

School Counsellor

Miss. Noura is always available to assist and support our families

Home- School Communication



Class Dojo

Parents can contact class teachers and senior leaders through this system.

Teachers will continually upload pictures and messages to showcase children's work and achievements.

Students will bring home a code with log-in details of how to sign up in the first week.



- Sent out weekly compiled by HOYs
- Highlight each year group's achievements and successes showcasing the wonderful things that have been happening
- Included homework included for each core subject
- Key Dates and news for parents
- Shared via Dojo / Google Classroom
- Half Termly Newsletter



Aspire- To what you want to be
Acquire- All the learning experiences you can
Achieve- Your dream

Year **المستة**
Weekly Newsletter **معلومات ولي الأمر الأسبوعية**

الأحد 27 من محرم 1441 هـ Thursday 3rd October

Message from Mr Craig - Head of Year 5 and 6

Dear Parents,

Each week you will now receive a newsletter on top of the homework sheet which gives you an overview of what has been happening in Years 5 and 6 at Al Rabeeh School. This is my first year in the UAE and I've met some of you before. I teach in Year 6 Red class and am the Head of Year for Year 5 and Year 6 - if you need to contact me, you can through ClassDojo, and I am linked to your child's class.

This week, we've had some extraordinary lessons and awards given to the children in Year 5 from; carefully dissecting the named parts of a fly plant from diagrams in Science; reading and writing numbers up to a million and beyond by grouping hundreds, tens and ones in maths to composing some amazing writing around Alma using fronted adverbials, expanded noun phrases and commas in a list in English. It has been a very enjoyable and action packed week.

It was particularly pleasing to hear about some of the reasons why the children were awarded 'Star of the Week'. As you may know, our core value for this year is Kindness and beginning next week, Mr Riyan will be selecting one child from each year group to receive a Kindness award for demonstrating acts of kindness individually throughout the course of the week. I know this will be a difficult decision each week for Mr Riyan and we will post our winners on ClassDojo after our weekly assembly.

I know as a team, we are extremely proud of the effort the children have put into their work this week and their displays of positive behavior throughout the school, acting as the role models for the younger children.



Reminders

- School timings-7:15am-2:20pm(12 noon Friday)
- Label clothing and equipment
- Water bottles- Bring to school and clearly label
- Hair tied back and measures taken to reduce the incidence of head lice
- Jewellery must not be worn please
- Healthy lunch boxes are advised. They help the children to learn, concentrate and grow into healthy young adults



NO NUTS POLICY

- This means -**No nuts or nut containing products are allowed on our premises** which includes **products like Nutella and Peanut Butter**.
- This is to protect our children as we have children in school who could die, as are result of being exposed to nuts.
- Please support us by ensuring no nuts are sent or brought into school.
- If you would like to discuss this or require information, please feel free to contact our School Nurses.

clinic@alrabeeh.sch.ae.



HEALTHY EATING

Please help us by packing a **healthy and nutritious lunch box**. **Childhood Obesity and Diabetes** is a serious issue in the U.A.E. Our students are growing – so we need to give their bodies and brains the right fuel to grow and develop. Please support us by ensuring:

- **No Fizzy/Sugary drinks**
- **No Sweets or Chocolates**
- **No Fast Food E.g. Fried products and Donuts.**



- Focus on student physical well being
- Support will parent queries
- Oversee medical needs through risk assessments
- Administer medication
- Provide health information to students and raise awareness
- Support Healthy Lifestyles ethos in sc

NURSES EMAIL ADDRES

clinic@alrabeeh.sch.ae



Christine Cajilla
School Nurse

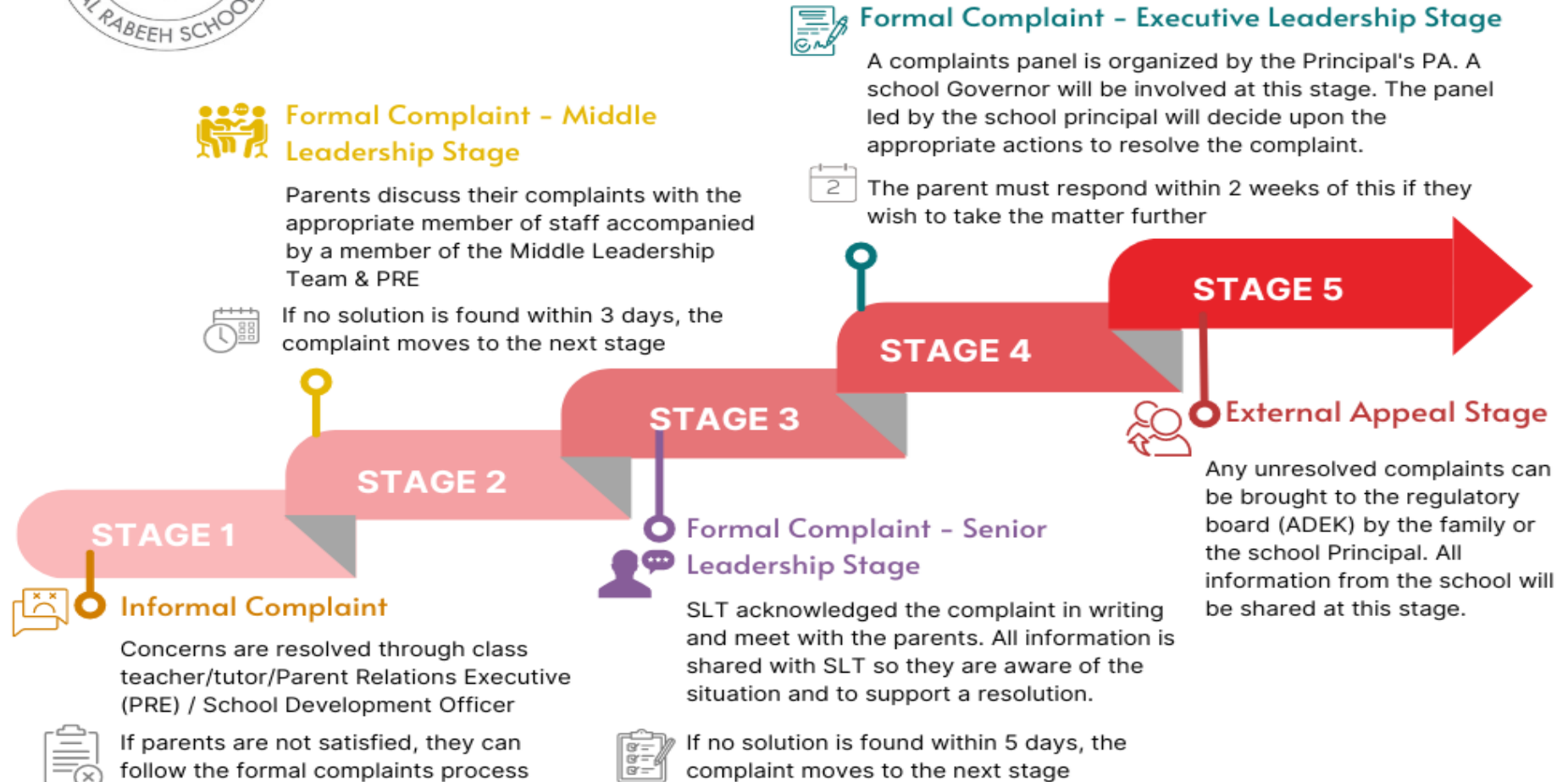


Asumpta Monis
Asst. Nurse

We understand that sometimes there might be concerns or queries that you, as parents, may have. We have detailed escalation policy on our website. Please see the summarised version here.



Five Stage School Escalation Process



Important note: The school Principal may be involved at any stage of this process to resolve the matter. All stages must be recorded, documented, and saved on the school management system.